

JUST ANOTHER NATURAL NUT

SOLUTIONS FOR SUSTAINABLE LIVING

THE CLEANING STANDARD



MANUAL THIRTEEN

TUBS & SHOWERS

Created by
April Anderson
(Just Another Natural Nut)

April Anderson Publication- 2013

Just Another Natural Nut, April Anderson Consulting, and The Green Goddess Campaign are property of April Anderson. Use of the above names and logos specifically created for the above names are prohibited unless permission is granted by April Anderson

All rights reserved. No part of this publication may be reproduced or used in any form or by any means – graphic, electronic, or mechanical, including photocopying, recording, or information storage-and-retrieval systems – without the written consent of the publisher

The publisher has made every effort to ensure all instructions given in this book are accurate and safe, however, due to differing conditions tools, and individual skills, the publisher cannot be responsible for any injuries, losses, or other damages that may result from the use of information in this book.

TUBS



TOOLS

1. Hand Scrub Brush
2. Paint Brush
3. Tooth brush
4. Plastic knife
5. Cloths

PRODUCT

1. Glass Cleaner
2. All Purpose Spray
3. Non-abrasive Scrub
4. Grout Cleaner

TIPS ON TOOLS & PRODUCT

1. Use the glass cleaner for light cleaning and the all-purpose for the heavier cleaning
2. Feel the inside of the tub before choosing to use the non-abrasive scrub. If there is no soap scum residue you don't need to use it.
3. The spray bottle can be a powerful dirt remover when the nozzle is in the high density stream position. Placed close to built-up corner the spray will loosen the dirt so that you may easily wipe away
4. Grout Cleaner doubles as a disinfecting spray for the jets in Jacuzzi tubs



BELIEVE IT OR NOT

These dots represent commonly missed areas



Bathroom products not moved to clean under and not wiped down



Under the taps not cleaned and polished



Outside of tub not wiped down and polished



Around the edges of taps and shower spray not scrubbed with toothbrush or hand held scrub brush



The lip/edge of tile will build up with dust if neglected



Around the edge of the tub with toothbrush or hand held scrub brush



Improper polishing of the taps and shower handle. There should be no streaks or smudges

DIP DAMP CLOTH IN TO CONTAINER OF NON ABRASIVE SCRUB. WITH A CIRCULAR MOTION START WITH THE AREA WHERE THE SOAP SCUM STARTS AND FINISH WITH THE BOTTOM OF THE TUB (RE DIP DAMP CLOTH IN TO NON ABRASIVE SCRUB WHEN NEEDED. CHANGE OUT CLOTH WHEN NEEDED) SPRAY WITH GLASS CLEANER, WIPE AWAY BAKING SODA AND POLISH DRY WITH CLEAN CLOTH



WIPE DOWN OUTSIDE OF TUB

WIPE DOWN TILE AROUND TUB. REMEMBER TO WIPE LIP OF TILE WALL

SPRAY TAPS AND SPOUT WITH GLASS CLEANER, WIPE AND POLISH DRY. USE TOOTHBRUSH TO SCRUB AROUND AND BEHIND

1. ALWAYS RUN YOUR HAND OVER AREAS TO ENSURE SOAP SCUM IS REMOVED
2. GET IN THE CORNERS. IF YOUR BRUSH CAN'T GET IN THE CORNERS USE THE PLASTIC KNIFE WITH THE CLOTH WRAPPED AROUND IT
3. SCRUB THE BUILT IN HOLDERS – UNDERSIDE AS WELL
4. ALL CONTAINERS ARE TO BE WIPED AND LABELS FACING FORWARD
5. WIPE DOWN AND POLISH SHOWER HEAD
6. DO NOT LEAVE SMUDGES ON TAPS, HANDLES, AND METAL FRAME....DO NOT LEAVE ANY HAIR OR DEBRIS BEHIND

SHOWERS



TOOLS

1. Hand Scrub Brush
2. Paint Brush
3. Tooth brush
4. Plastic knife
5. Cloths
6. Flat Mop
7. Q Tips

PRODUCT

1. Glass Cleaner
2. All Purpose Spray
3. Non-abrasive Scrub
4. Grout Cleaner

TIPS ON TOOLS & PRODUCT

1. Use the glass cleaner for light cleaning and the all-purpose for the heavier cleaning
2. Feel the bottom and edge of shower before choosing to use the non –abrasive scrub. If there is no soap scum residue you don't need to use it.
3. The spray bottle can be a powerful dirt remover when the nozzle is in the high density stream position. Placed close to built-up corner the spray will loosen the dirt so that you may easily wipe away
4. Grout Cleaner doubles as soap scum remover
5. Vinegar (white equal parts water and vinegar) in a spray bottle will clean hard water the best (always wear a mask and safety glasses when working with vinegar in a high pressure mode – spray bottle – as the fumes can be dangerous to breathe in and your eyes will sting if you get any in them)



BELIEVE IT OR NOT

These dots represent commonly missed areas



The lip and edge of shower base not scrubbed



Under the seating area ignored



Handles and hinges not polished – both sides of the glass



Around the edges of taps and shower spray not scrubbed with toothbrush or hand held scrub brush



The edge of the drain has pink mould around it from not being scrubbed properly



The ceiling of the shower not washed

USE HAND HELD SCRUB BRUSH TO CLEAN THE DRAIN CATCHER

DIP DAMP CLOTH IN TO CONTAINER OF NON ABRASIVE SCRUB. WITH A CIRCULAR MOTION START WITH THE AREA WHERE THE LIP OF SHOWER BASE AND WORK IN A CLOCKWISE FASHION AND FINISH WITH THE BOTTOM OF SHOWER TRAY (RE DIP DAMP CLOTH IN TO NON ABRASIVE SCRUB WHEN NEEDED. CHANGE OUT CLOTH WHEN NEEDED) SPRAY WITH GLASS CLEANER, WIPE AWAY BAKING SODA AND POLISH DRY WITH CLEAN CLOTH



SPRAY GROUT AND TILES WITH GROUT CLEANER AND USE BLUE SCRUB BRUSH IN AREAS WHERE THERE IS VISUAL SOAP SCUM...JUST WIPE DOWN THE AREA THERE IS NOT

SPRAY EDGES WITH ALL-PURPOSE AND SCRUB WITH BLUE BRUSH DO NOT FORGET INSIDE EDGE AT GLASS AND WHERE THE DOOR OPENS AS WELL AS OUTSIDE RIM (TOP, EDGES, AND SIDES)

SPRAY GLASS WITH ALL-PURPOSE, SCRUB USING WITH CLOTH (USE CIRCULAR MOTION)...SPRAY WITH GLASS CLEANER TO WIPE CLEAN AND THEN POLISH DRY

CLEAN ALL METAL WITH ALL PURPOSE AND POLISH DRY

1. ALWAYS RUN YOUR HAND OVER AREAS TO ENSURE SOAP SCUM IS REMOVED
2. GET IN THE CORNERS. IF YOUR BRUSH CAN'T GET IN THE CORNERS USE THE PLASTIC KNIFE WITH THE CLOTH WRAPPED AROUND IT
3. SCRUB THE BUILT IN HOLDERS – UNDERSIDE AS WELL

4. ALL CONTAINERS ARE TO BE WIPED AND LABELS FACING FORWARD
5. WIPE DOWN AND POLISH SHOWER HEAD AS WELL AS OVERHEAD LIGHT
6. MAKE SURE THE GLASS IS CLEAR ON BOTH SIDES
7. DO NOT LEAVE SMUDGES ON TAPS, HANDLES, AND METAL FRAME....DO NOT LEAVE ANY HAIR OR DEBRIS BEHIND

TROUBLESHOOTING

Instead of placing a step ladder inside the shower, use a flat mop with a cloth sprayed with all glass cleaner to clean and polish the upper part of glass enclosure and the ceiling of shower as well as the unreachable sides. These areas don't see soap scum so there is no need for scrubbing but prolonged neglect will cause mould issues.

Use a handled deck brush to clean tiled showers in spots where it is unreachable and the grout needs cleaning....turn the nozzle on the all-purpose spray closer to stream to allow the cleaner to reach the higher areas. Scrub and then wipe clean with the flat mop and clean cloth attached.

When dealing with shower curtains. Spray the inside with the Grout Cleaner (doubling as disinfectant) and wipe the bottom to remove pink soap scum

Q-tips make a great cleaner for Jacuzzi spray heads...Spray Grout Cleaner in to the spray heads and then wipe out soap scum and mould with the Q-tips.



Spray area with all-purpose spray and with hand held scrub brush start in the corner on the left and scrub to the corner on the right making sure to get in to all the grooves. Turn the all-purpose spray to stream and spray in to the edge where you can see pink in the picture on the left...rescrub and with a new dry cloth, turn the nozzle back to spray mist, spray one more time and polish to get the results on the right (if you find it hard removing the water spots you see on the left use the non-abrasive scrub to remove)



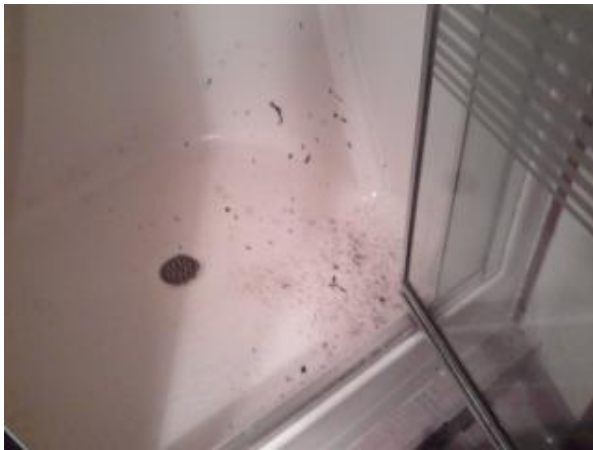
The white you see in the bottom of this shower is grout and tile that has not been properly cleaned. You are actually witnessing bubbles of the grout cleaner (disinfectant) attacking bacteria and mould after a light scrub with the hand held scrubber



The inside of the plexi glass doors were ignored for a very long time. The grout cleaner sprayed on the inside and with the hand held scrubber in a circular motion, the product worked in. Left to dwell while the rest of the bathroom was cleaned and came back with glass cleaner spray, spraying the entire area and wiping away the soap scum (trading out the cloths when necessary). Final spray and polish dry with clean cloth



Bottom of fiberglass shower neglected. Dip damp cloth in to non- abrasive scrub and in circular motion work through the build-up until bottom feels smooth to touch. Spay with glass cleaner to remove scrub residue and re-spray to polish dry.



What is actually in the bottom of this shower is mould and soap scum from the bottom metal lip on the glass door. Turn the spray nozzle of the all-purpose cleaner to stream, hold it close to the crevice at the bottom of the glass door and spray, pushing the debris toward the shower. Follow with a toothbrush to remove all soap scum and mold. Spray on last time on stream and the track should be clean.